

social research
and evaluation.

Who we are

ICON-INSTITUTE Consulting Group is one of the leading development consulting companies based in Germany. We offer innovative solutions and services to our clients and partners. Our reputation for excellence and efficiency is built on nearly 50 years of experience and a portfolio including over 860 assignments in more than 100 countries.

ICON Business Areas

- Education and Training
- Economic Development
- Financial Sector Development
- Engineering and Infrastructure
- Agriculture and Rural Development
- Social Policy and Health
- Social Research and Evaluation
- Statistics
- Information and Communication Technology
- Governance and Public Administration
- Justice and Legislation



Our Approach

We apply formative and/ or summative analysis of the design, implementation, results, impacts and sustainability of a project or policy.



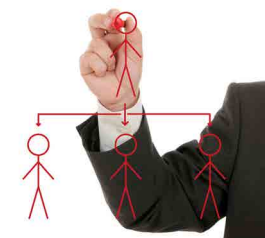
We use different data collection methods such as desk review, participatory methods, interviews, focus groups and surveys. This approach of data triangulation ensures cross-checking data from multiple sources and allows coming up with valid and objective evaluation results. The collected data is then analysed with descriptive and econometric tools.

Throughout the whole evaluation process we place great value on quality assurance. In many of our assignments we design and implement online-based monitoring and information systems.

ICON's Projects and Offices



We draw evidence-based conclusions and recommendations for policy-makers. These practical recommendations aim at contributing to informed policy-making and improved quality and impact in public policy interventions.



concepts. consulting. training.

Our Services

Quantative, Qualitativ and Mixed Methods Approach

- Desk and literature review
- Qualitative methods like semi-structured interviews, focus groups, workshops
- Quantitative methods like structured interviews and surveys
- Combination of both qualitative and quantitative instruments

Descriptive and Econometric Analysis

- Sound design and implementation of evaluations at sector, policy, programme and project level
- Design and organisation of data collection
- Data analysis including descriptive as well as econometric data analysis like regression, matching etc.



Online Based Monitoring and Quality Assurance

- Design and implementation of online-based monitoring systems
- Monitoring and evaluation of projects' progress along whole project cycle

Evidence-based Recommendations and Policy Advice

- Conclusions and recommendations for policy-makers
- Practical and hands-on recommendations to contribute to improved quality and impact in public policy interventions

Selected References

Africa (multiple countries): Evaluation of the Programme 'Strengthening Sustainable Development in Agriculture', BMZ/ GIZ

Africa (multiple countries): Progress Evaluation of the programme 'Green Innovation Centres in the Agricultural and Food Sector', BMZ/ GIZ

Belgium: Study on Mobility Developments in School Education, Vocational Education and Training, EU

Belgium: New Skills for New Jobs - Background on Monitoring Labour Market Developments in the EU and the Key Role of Employment Service, EU/ DG-Enlargement

Germany: Textile Alliance (Evaluation of the member's Roadmaps)

Germany: Evaluation des BMBF-Förderschwerpunktes zur Förderung von Forschungs- und Entwicklungsvorhaben im Bereich "Alphabetisierung/ Grundbildung für Erwachsene", BMBF

Germany: Scientific monitoring of pilot projects in the priority area "Development and quality assurance in occupational training", BMBF

Global: Multi-country evaluation studies on social/ human development issues of EC external cooperation, EU

Italy, Montenegro, Ukraine: Evaluation of ETF Labour Market Activities, EU/ ETF

Italy, Jordan, Republic of Moldova, Montenegro, Tajikistan: Torino Process Interim Evaluation, EU/ ETF

Luxembourg: Feasibility Study for the Setup of a European Master in Official Statistics (EMOS), EU

Rwanda: Evaluation of Kitchen and School Garden Program, BMZ/ GIZ

Samoa: Mid Term Evaluation of the Sector Policy Support Programme, EU-EDF

For further information, please contact:

ICON-INSTITUTE GmbH & Co. KG Consulting Gruppe
Business Area **Social Research and Evaluation**
Von-Groote-Str. 28, 50968 Köln, Germany
Tel.: + 49 221 937430
Fax: + 49 221 937435
Email: christophe.dietrich@icon-institute.de
Web: www.icon-institute.de

